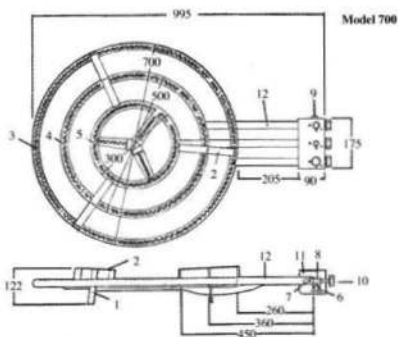


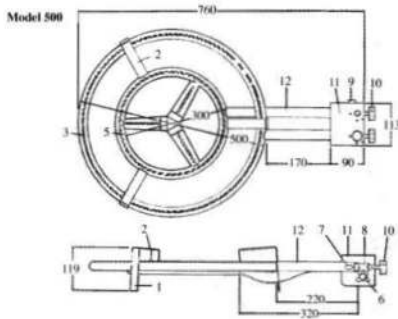
BURNER TYPE		Ø 700			Ø 600			Ø 500			Ø 400		
VALVE MODEL		GH 405	HQ 36	HQ 37	GH 405	HQ 36	HQ 37	GH 405	HQ 36	HQ 37	GH 405	HQ 36	HQ 37
Ø INJECTOR en 1/100 mm	G-20 (18-20 mbar)	225	225	240	225	225	240	200	200	210	180	180	185
	G-20 + G-25 (20/25 mbar)	225	225	240	225	225	240	200	200	210	180	180	185
	G-30 / G-31 (30 mbar)	155	155	155	155	155	155	130	130	130	120	120	120
	G-30 / G-31 (50 mbar)	140	140	150	140	140	140	130	130	130	120	120	120
	G-30 + G-31 (28-30/37 mbar)	155	155	155	155	155	155	130	130	130	120	120	120
G-31 (50 mbar)		140	155	155	140	155	155	125	140	140	120	130	130

BURNER TYPE		Ø 350			Ø 300			Ø 200			Ø 150		
VALVE MODEL		HQ 36	GH 405	HQ 36	HQ 37	GH 405	HQ 36	HQ 37	HQ 36	HQ 37	HQ 36	HQ 37	HQ 36
Ø INJECTOR en 1/100 mm	G-20 (18-20 mbar)	175	180	180	190	160	160	160	130	130	130	130	130
	G-20 + G-25 (20/25 mbar)	175	180	180	190	160	160	160	130	130	130	130	130
	G-30 / G-31 (30 mbar)	120	120	120	120	105	105	105	80	80	80	80	80
	G-30 / G-31 (50 mbar)	115	120	120	125	100	100	100	70	70	70	70	70
	G-30 + G-31 (28-30/37 mbar)	120	120	120	120	100	105	105	80	80	80	80	80
G-31 (50 mbar)		115	115	125	130	100	105	105	80	80	80	80	80

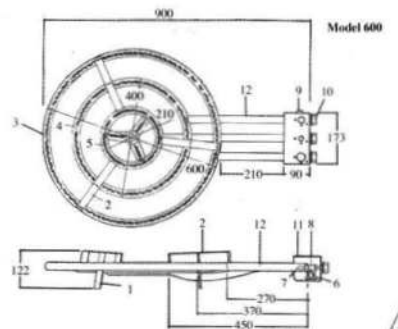
## SIZES AND MAIN PARTS



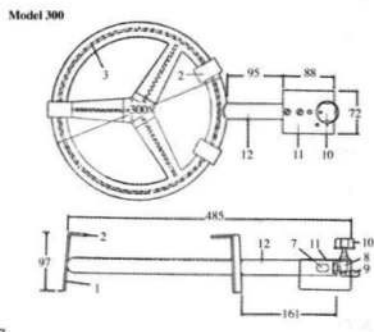
Model 700



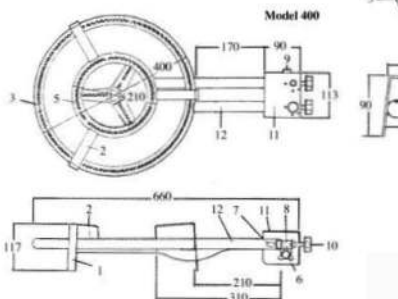
Model 500



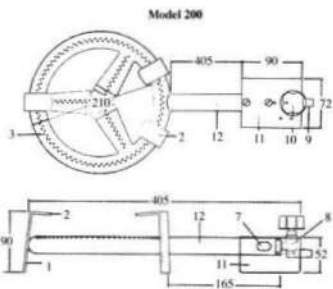
Model 600



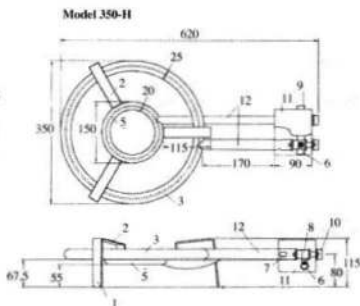
Model 300



Model 400



Model 200



Model 350-H

1. Leg
2. Stand
3. Big Ring
4. Medium Ring
5. Small Ring
6. Gas Ramp
7. Venturi
8. Gas Valve
9. Gas Connection
10. Knob
11. Gas Valve Protector
12. Extension Tubes

MGF



## INSTRUCTIONS FOR INSTALLATION, USE AND MAINTENANCE

Models: 700; 600; 500; 400; 350-H; 300; 200

GB

### INSTRUCTIONS FOR INSTALATION

CE  
1312

The specifications plate indicates the adjustment conditions for this device..

The main gas installation to the appliance should be carried out by an authorised fitter in compliance with the legislation of the country in which it is to be installed and should include a gas shutoff cock as near as possible to the appliance if the device is working with natural gas.

This appliance should not be connected to a device for evacuating combustion fumes. It should be installed and connected in accordance with the installation regulations of the country in question.

### IMPORTANT !!!

" FOR OUTDOOR USE ONLY" - "READ THE INSTRUCTIONS BEFORE USE"  
" DON'T MOVE THE BURNER WHILE IN OPERATION" - "CLOSE THE GAS REGULATOR AFTER EACH USE"

"ANY ALTERATION OF THE BURNER MAY RESULT DANGEROUS" - "THE DEVICE SHOULD ALWAYS BE PLACED ON AN FIREPROOF SURFACE"

### POSSIBLE RISKS.

Since the use of this burner requires constant attention and outdoor use, no safety device is necessary.

Use soapy water to check any posible gas leak. A flame MUST NEVER be used.

When connecting and starting up the burner, DO NOT SMOKE, NOR HAVE ANY POSSIBLE IGNITION POINTS NEARBY.

The accessible parts of the burner may be hot. KEEP CHILDREN AWAY.

### GAS CONNECTING.

Before connecting the burner, check that there is no flame nearby and all the controls are in OFF position.

### Natural gas.

This device has a 1/2" diameter screw gas inlet that complies the ISO 7-1, whose end is designed to take a gastight seal.

The gas connection can be carried out with a rigid or flexible pipe:

- If you use a rigid pipe, a gas shutoff cock must be fitted as near to the connection of the burner as possible.
- If you use a flexible pipe, it must be homologated and must not have exceed the expiry date. It must be shorter than 1,50 m.

### L.P.G

If G.L.P is used, the manufacturer will fit the appliance with the appropriate connecting nozzle for each country.

In this case the flexible pipe must be officially approved and within the expiry date. It must be shorter than 1,50 m.

Replace the flexible pipe when regulations require it.

The gas regulator and the bottle used must fulfil the regulations of the country in which the burner is marketed.

### INSTRUCTIONS FOR USE AND MAINTENANCE

### VERY IMPORTANT

"THE GAS BURNER MUST NOT BE MANIPULATED".

"THE INSTALLATION OF THIS DEVICE MUST BE CARRIED OUT BY A TECHNICIEN".

"PLACE THE BURNER ON A FIREPROOF SURFACE" - "THIS DEVICE IS FOR OUTDOOR USE"

While in use, this device must be away from any inflammable material.

Place the burner on a flat and horizontal surface.

The device must not be moved while in operation.

Use protective gloves to touch hot parts of the burner.

Do not twist the flexible pipe during installation or use.

After use, close the stop-cock outside the burner or the gas regulator of the bottle( gas L.P.G).

The replacement of the gas bottle must be carried out far from any inflammable source.

In case that the venturi are accidentally blocked, please cut the gas flow and do not try to connect it again until the problem is solved by Technical Service.

## TECHNICAL DATA

### 1. CATEGORY, TYPE OF GAS AND PRESSURES

COUNTRIES	CATEGORY	FAMILY											
		SECOND				THIRD							
		Group H		Group E		Group E+		Group B/P (30 mbar)		Group 3+		Group B/P (50 mbar)	
		Gas	Pressure (mbar)	Gas	Pressure (mbar)	Gas	Pressure (mbar)	Gas	Pressure (mbar)	Gas	Pressure (mbar)	Gas	Pressure (mbar)
SPAIN	H2H3-H2H3P	G-20	18	---	---	---	---	---	---	G-30+G-31	28-30/37	G-31	50
PORTUGAL	H2H3-	G-20	20	---	---	---	---	---	---	G-30+G-31	28-30/37	---	---
GERMANY	H2E3B/P	---	---	G-20	20	---	---	---	---	---	---	G-30/G-31	50
DENMARK	H2H3B/P	G-20	20	---	---	---	---	G-30/G-31	30	---	---	---	---
UNITED KINGDOM	H2H3-H2H3P	G-20	20	---	---	---	---	---	---	G-30+G-31	28-30/37	G-31	50
AUSTRIA	H2H3B/P	G-20	20	---	---	---	---	---	---	---	---	G-30/G-31	50
FINLAND	H2H3B/P	G-20	20	---	---	---	---	G-30/G-31	30	---	---	---	---
FRANCE	H2E-3-H2E-3B/P	---	---	---	---	G-20+G-25	20/25	G-30/G-31	30	G-30+G-31	28-30/37	G-30	50
IRELAND	H2H3-	G-20	20	---	---	---	---	---	---	G-30+G-31	28-30/37	---	---
GREECE	H2H3-H2H3B/P	G-20	20	---	---	---	---	G-30/G-31	30	G-30+G-31	28-30/37	G-30	50
BELGIQUE	H2E-3+	---	---	---	---	G-20+G-25	20/25	---	---	G-30+G-31	28-30/37	G-30	50
SWEDEN	H2H3B/P	G-20	20	---	---	---	---	G-30/G-31	30	---	---	---	---
ITALY	H2H3-	G-20	20	---	---	---	---	G-30/G-31	30	G-30+G-31	28-30/37	---	---
THE NETHERLANDS	H2L3B/P	---	---	---	---	---	---	G-30/G-31	30	---	---	G-31	50
SWITZERLAND	H2H3-H2H3B/P	G-20	20	---	---	---	---	---	---	G-30+G-31	28-30/37	G-30/G-31	50
LUXEMBOURG	H2E	---	---	G-20	20	---	---	---	---	---	---	---	---
CHEC REPUBLIC	H2H3-H2H3B/P	G-20	20	---	---	---	---	G-30/G-31	30	G-30+G-31	28-30/37	G-30/G-31	50
NORWAY	H2H3B/P	G-20	20	---	---	---	---	G-30/G-31	30	---	---	---	---
CYPRUS	H2H3-H2H3B/P	G-20	20	---	---	---	---	G-30/G-31	30	G-30+G-31	28-30/37	G-30	50
ESTONIA	H2H3B/P	G-20	20	---	---	---	---	G-30/G-31	30	---	---	---	---
HUNGARY	H2H3B/P	G-20	20	---	---	---	---	G-30/G-31	30	---	---	---	---
LITHUANIA	H2H3B/P	G-20	20	---	---	---	---	G-30/G-31	30	---	---	---	---
LATVIA	H2H	G-20	20	---	---	---	---	---	---	---	---	---	---
MALTA	H3B	---	---	---	---	---	---	G-30	30	---	---	---	---
POLAND	H2E3B/P	---	---	G-20	20	---	---	G-30/G-31	30	---	---	---	---
ROMANIA	H2H3B/P-H2H3P	G-20	20	G-20	20	---	---	G-30/G-31	30	---	---	---	---
SLOVENIA	H2H3-H2H3B/P	G-20	20	---	---	---	---	G-30/G-31	30	G-30+G-31	28-30/37	---	---
SLOVAKIA	H2H3-H2H3B/P	G-20	20	---	---	---	---	G-30/G-31	30	G-30+G-31	28-30/37	G-30/G-31	50

#### 2.1 CONSUMPTION AND EFFICIENCY OF MAIN BURNERS

BURNER / MODEL		Ud.	Ø 700	Ø 600	Ø 500	Ø 400	Ø 350	Ø 300	Ø 200	Ø 150	700	600	500	400	350	300	200
NOMINAL CALORIFIC CONSUMPTION*	G-20 (20 mbar); G-25 (25 mbar)	kW	10,00	9,60	7,60	6,40	5,80	6,50	5,00	3,20	24,10	21,00	14,10	11,40	9,00	6,50	5,00
	G-30 (28-30 mbar); G-31 (37 mbar)	kW	10,00	9,60	7,60	6,40	6,20	6,50	5,00	3,20	24,10	21,00	14,10	11,40	9,40	6,50	5,00
	G-30 (50 mbar)	kW	11,00	11,00	9,00	8,00	7,50	8,00	5,50	3,20	28,00	24,50	17,00	13,50	10,70	8,00	5,50
NOMINAL CONSUMPTION	G-31 (50 mbar)	kW	11,00	11,00	9,00	8,00	6,50	8,00	5,50	3,20	28,00	24,50	17,00	13,50	9,70	8,00	5,50
	G-20 (20 mbar)	(m³/h)	0,95	0,91	0,72	0,61	0,55	0,62	0,48	0,30	2,30	2,00	1,34	1,09	0,86	0,62	0,48
	G-25 (25 mbar)	(m³/h)	1,11	1,06	0,84	0,71	0,64	0,72	0,55	0,35	2,67	2,33	1,56	1,26	1,00	0,72	0,55
	G-30 (28-30 mbar)	(g/h)	727	698	553	465	451	473	364	233	1752	1527	1025	829	683	473	364
	G-30 (50 mbar)	(g/h)	800	800	654	582	545	582	400	233	2036	1781	1236	982	778	582	400
	G-31 (37 mbar)	(g/h)	714	686	543	457	443	464	357	229	1721	1500	1007	814	671	464	357
	G-31 (50 mbar)	(g/h)	786	786	643	571	464	571	393	229	2000	1750	1214	964	693	571	393

Nominal Calorific Consumption on P.C.S.

#### 2.2 CONSUMPTION AND EFFICIENCY OF DEVICES

BURNER / MODEL		Ud.	Ø 700	Ø 600	Ø 500	Ø 400	Ø 350	Ø 300	Ø 200	Ø 150	700	600	500	400	350	300	200
NOMINAL CALORIFIC CONSUMPTION*	G-20 (20 mbar); G-25 (25 mbar)	kW	10,00	9,60	7,60	6,40	5,80	6,50	5,00	3,20	24,10	21,00	14,10	11,40	9,00	6,50	5,00
	G-30 (28-30 mbar); G-31 (37 mbar)	kW	10,00	9,60	7,60	6,40	6,20	6,50	5,00	3,20	24,10	21,00	14,10	11,40	9,40	6,50	5,00
	G-30 (50 mbar)	kW	11,00	11,00	9,00	8,00	7,50	8,00	5,50	3,20	28,00	24,50	17,00	13,50	10,70	8,00	5,50
NOMINAL CONSUMPTION	G-31 (50 mbar)	kW	11,00	11,00	9,00	8,00	6,50	8,00	5,50	3,20	28,00	24,50	17,00	13,50	9,70	8,00	5,50
	G-20 (20 mbar)	(m³/h)	0,95	0,91	0,72	0,61	0,55	0,62	0,48	0,30	2,30	2,00	1,34	1,09	0,86	0,62	0,48
	G-25 (25 mbar)	(m³/h)	1,11	1,06	0,84	0,71	0,64	0,72	0,55	0,35	2,67	2,33	1,56	1,26	1,00	0,72	0,55
	G-30 (28-30 mbar)	(g/h)	727	698	553	465	451	473	364	233	1752	1527	1025	829	683	473	364
	G-30 (50 mbar)	(g/h)	800	800	654	582	545	582	400	233	2036	1781	1236	982	778	582	400
	G-31 (37 mbar)	(g/h)	714	686	543	457	443	464	357	229	1721	1500	1007	814	671	464	357
	G-31 (50 mbar)	(g/h)	786	786	643	571	464	571	393	229	2000	1750	1214	964	693	571	393

Nominal Calorific Consumption on P.C.S.

#### 3. CHARACTERISTIC OF THE DEVICES

		700	600	500	400	350	300	200
BURNERS	Ø 700 (Ud.)	1	--	--	--	--	--	--
	Ø 600 (Ud.)	--	1	--	--	--	--	--
	Ø 500 (Ud.)	1	--	1	--	--	--	--
	Ø 400 (Ud.)	--	1	--	1	--	--	--
	Ø 350 (Ud.)	--	--	--	--	1	--	--
	Ø 300 (Ud.)	1	--	1	--	--	1	--
	Ø 200 (Ud.)	--	1	--	1	--	--	1
	Ø 150 (Ud.)	--	--	--	--	1	--	--

## USE.

### 1. LIGHTING.

Turn on the shutoff cock for the main gas supply (Natural gas) or the gas regulator (gas L.P.G.).

Press the control of the burner you wish to light and turn it anticlockwise to the position that shows MÁXIMO (Δ) or the power wished (f) (Drawing. 4 y 5) and at the same time approach a flame.

Check the steadiness of the flame.

Go on turning the knob until the desired power is reached.

Drawing 4: Turn anticlockwise until you reach MINIMUM (Δ).

Drawing 5: Turn anticlockwise until you reach the MINIMUM desired.

The pans used should be of a suitable size for the device. (The flames should never surpass the base of the pan)

Place the pan on the burner, on the supports provided.

Recommended pan guide size.

Burner Ø 700: ≥ 850 mm de diameter - Burner Ø 600: ≥ 750 mm de diameter - Burner Ø 350: ≥ 450 mm de diameter.

Burner Ø 500: ≥ 600 mm de diameter - Burner Ø 400: ≥ 500 mm de diameter - Burner Ø 150: ≥ 250 mm de diameter.

Burner Ø 300: ≥ 400 mm de diameter - Burner Ø 200: ≥ 300 mm de diameter.

The pans must not exceed the area of the valve and knobs.

Pans maximum weight recommended by the manufacturer.

On Mod. 700 ≤ 90 kg - On Mod. 600 ≤ 80 kg - On Mod. 350 ≤ 55 kg

On Mod. 500 ≤ 60 kg - On Mod. 400 ≤ 60 kg

On Mod. 300 ≤ 55 kg - On Mod. 200 ≤ 50 kg

These weights must be limited in case you use non reinforced legs.

### 2. TO SWITCH OFF.

Turn the gas valve control of the burner you wish to swicht off anticlockwise to the OFF position (\*). (Drawing. 4 and 5)

Turn off the main gas to appliance shutoff cock or the gas regulator.

### UPKEEP AND MAINTENANCE.

This device must only be cleaned when it is cool. Use a damp soapy cloth, then rinse and dry it (make sure that water does not enter the burners). The enamel coating makes cleaning easy.

The only part you may need to replace is the gas valve. This operation may only be carried out by the manufacturer or by personnel authorized by the latter.

Check the expiry date printed on the flexible pipe and replace it if necessary.

Any operation other than cleaning should be carried out by qualified persons authorised by the manufacturer, except for the replacement of the flexible pipe which the user can replace himself following the manufacturer's instructions.

In case of gas leak, turn off the shutoff cock on the outside of the device or the gas regulator.

If the injector blocks, do not insert any sharp object, user a soft brush or air pressure.

In order to check any possible gas leak, use soapy water, never use a flame.

The burner should be stored in a suitable place, valves and connections duly protected in order to prevent them from wear and switched off.

### ADAPTATION TO OTHER GAS TYPES.

The devices are prepared to use with a fixed gas type.

If by any chance the device is to be used with a different type of gas, the change to the new gas must be carried out by the manufacturer or by personnel authorized by the latter.

To adapt it to another type of gas, you only need to replace the injector according to the following sheet.

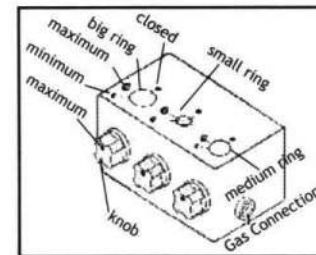
Should you replace the injector, stick a label where the new type and gas pressure are stated.

**IMPORTANT:** The injectors must be marked with the relevant diameter according to the type of gas shown in the previous sheet.

### PERIODS OF SERVICE.

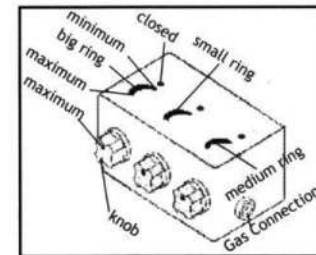
It is recommended to check the device at least once a year.

In the event of any anomaly or bad operation, the device should be checked by the manufacturer or a qualified technician.



Drawing 4.

Valve controls HQ-36



Drawing 5.

Valve controls HQ-37